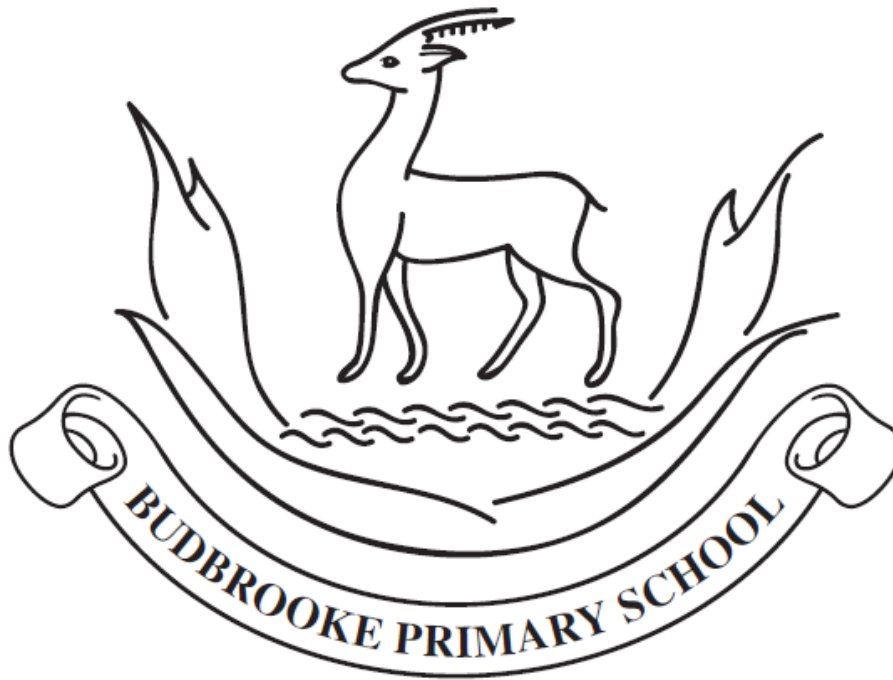


# Budbrooke Press

Friday 31st January - Spring Term 1, Week 4

## In This Issue



- Acting head of School Message
- Concerns and Complains
- Road Safety
- Nut Free School
- Golden Book
- School Values Rewards
- Elm Class Spotlight
- Pupil Voice
- National Story Telling Week
- NSPCC Number Day
- Spring Term 1 Clubs
- Children's Mental Health Week

- Elm Class change of assembly date
- Change to Teacher Assistants Timetable
- School Uniform
- Job Opportunity
- PE Kits to be Worn to School
- Absences & Lateness
- Promotional and Free Lunches
- Diary Dates
- Contact Us

## A message from the Acting Head of School



Dear Parents,

Another fantastic week has come to an end and I can't quite believe how quickly the time is going as we are hurling towards the half term!

This week Year 3 ventured to Nottingham to visit 'Nottingham Rocks' as part of our deep and diverse experiences to support learning based on their curriculum 'Rocks, Relics and Rumbles'. All the pupils enjoyed this experience and were full of excitement and enthusiasm when they returned to school, they were amazing ambassadors for Budbrooke and displayed all the core values at all times - well done!

Next week is action-packed with lots of activities and opportunities to wear different items of clothing - please see the 'Events next week' section on the newsletter below.

We cannot wait to welcome lots of family members into school for our story telling week event next week on Thursday and Friday, more information about this is contained within this newsletter.

Have a wonderful weekend with family and friends and I look forward to seeing some of you soon.

Mrs Lisa Hopkins

Acting Head of School/DSL/SENCO

## Concerns and Complaints

Please report any concerns or complaints to [admin2033@welearn365.com](mailto:admin2033@welearn365.com).

Please do not use the SENCO email. This email is for Special Educational Need concerns only.

Thank you.

## Road Safety- Keeping our pupils safe.

Younger children need lots of hand-holding and supervision when near roads – the street can be a distracting place for them to be, with lots of sights and sounds particularly when they are arriving to or leaving school.

Please encourage young children to get into the habit of holding your hand and being sensible when near a road.

### Learning the Green Cross Code

Younger children find it difficult to judge the speed and distance of traffic – so they don't know when it's safe to cross the road.

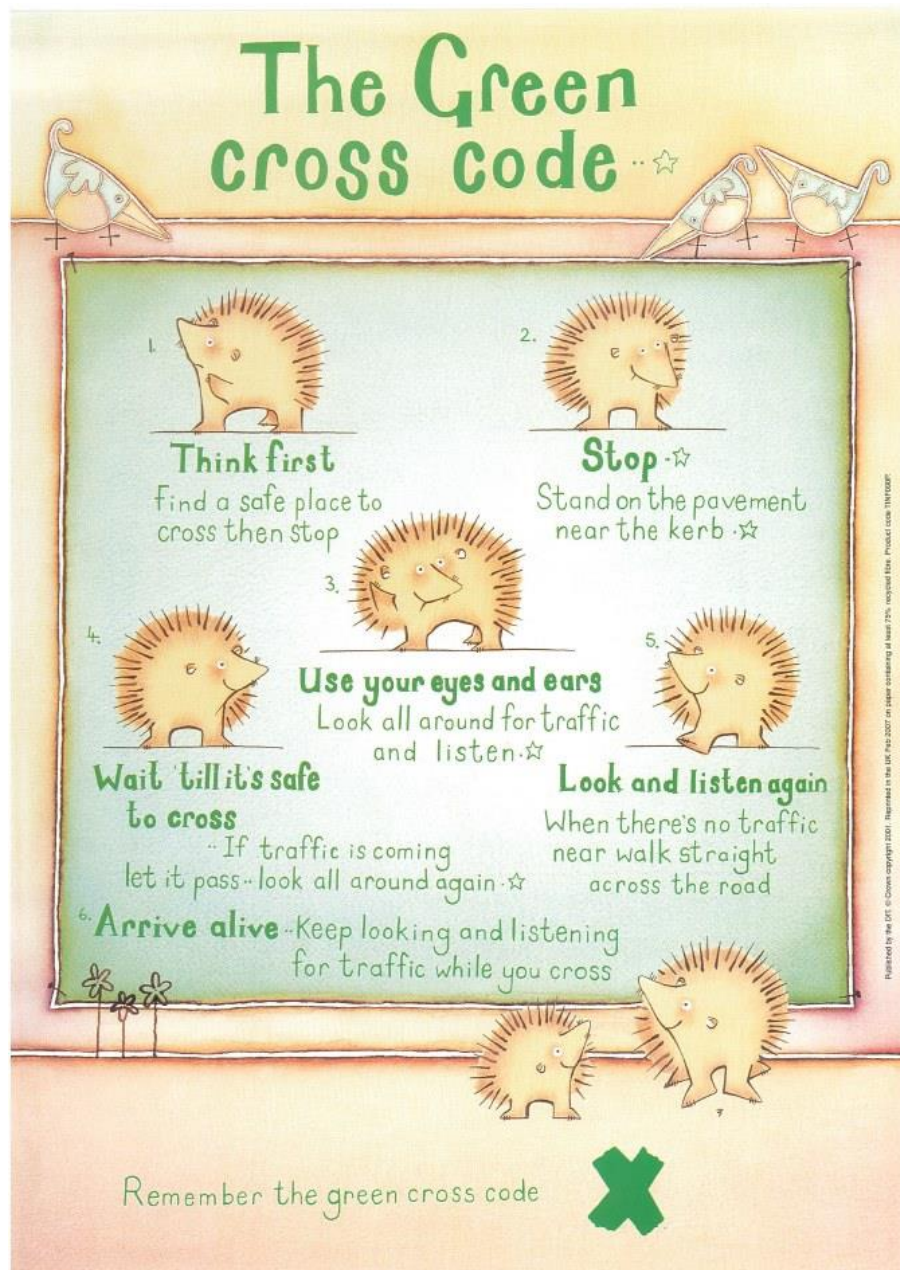
You can start teaching children the Green Cross Code from age five, encouraging them to stop, look, listen and think before crossing the road.

It can be a fun activity to teach children while you're on the school run or a walk to the park. Focus on the core steps of crossing the road safely:

- **Think!** First find the safest place to cross.
- **Stop!** Stand on the pavement near the kerb.
- **Look and listen!** Look all around for traffic and listen.
- **Wait!** Until it's safe to cross. If traffic is coming, let it pass.
- **Look and listen again!** ...

- Arrive alive!

[https://www.roadwise.co.uk/schools/using-the-road/green-cross-code/Green cross code - Roadwise](https://www.roadwise.co.uk/schools/using-the-road/green-cross-code/Green%20cross%20code%20-%20Roadwise)



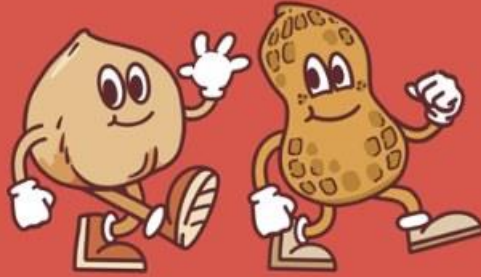
## No Nuts School

A gentle reminder that **nuts of any type or any form are NOT allowed in school.**

We have multiple pupils with life-threatening nut allergies. Please help in keeping the chances of nut exposure to a minimum.

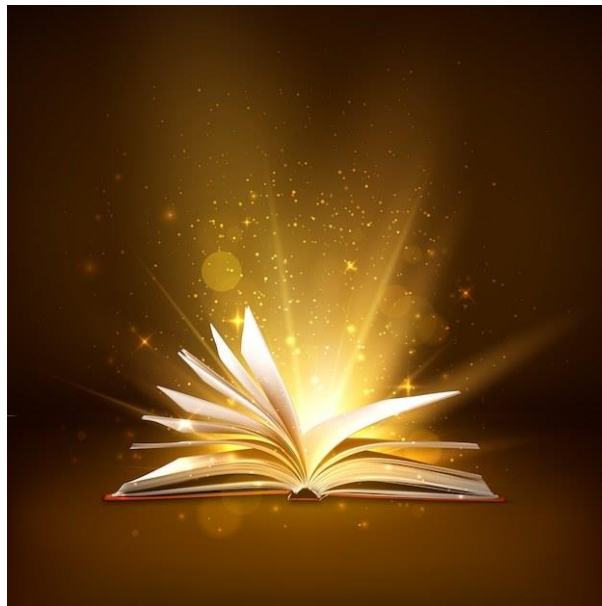
Thank you.

No  
nuts  
please!



Thank you for helping  
us keep people with  
allergies safe.

## Golden Book



Maple- McCarthy

Elm- Teo

Beech- Selia

Holly- Lola

Chestnut- Phoebe

Redwood- Harry

Cherry- Poppy

Bonus Star Award- Amber

## School Values Rewards

Confidence: Brody- Chestnut

Collaboration: Bella- Holly

Curiosity: Orla-Holly

Challenge: Arlo- Elm

Consideration: Charlotte- Chestnut

## Elm Class Spotlight

Elm class have continued to make a fantastic start to the Spring Term! We have started our topic 'Bright Lights, Big City' and have been learning about the physical and human characteristics of the United Kingdom, including exploring the characteristics and features of our capital city, London. In Science we have started our 'Seasonal Changes' topic. The children particularly enjoyed going outside to find deciduous and evergreen trees!

We are so proud of how well the children's knowledge of phonics is now showing in their reading and writing. We love seeing the progress they are making each week in their phonics and homework books. In literacy we have been using the book 'Beegu' to inspire the children's writing. We have been learning to use speech bubbles, use adjectives, make predictions, ask questions and use conjunctions. We enjoyed creating a 'Lost' poster this week.

We have loved starting Art this half term and have been looking at examples of transient art and have used natural and manmade materials to create our own weather symbol themed transient art.

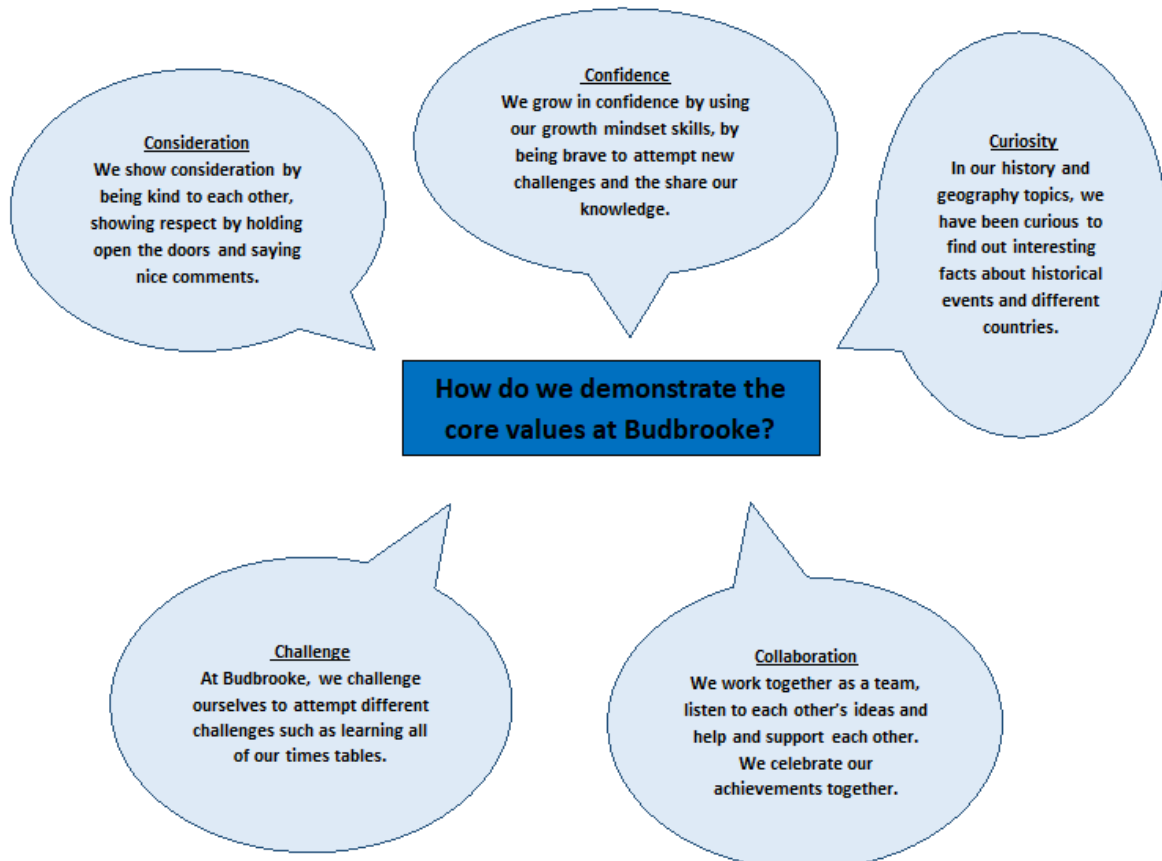
In our Maths we have just come to an end of our addition and subtraction unit and have just begun learning about place value within 50.

The children have particularly enjoyed computing and are enjoying our weekly visits to the computer suite. The children are making huge progress with logging themselves on to the computers and exploring the different activities on Purple Mash. Please continue to keep logging in at home and practise activities at home.

We are super proud of all the children and enjoying seeing the progress they are making in every area.



## Pupil Voice



## National Story Telling Week



Dear Parents/Guardians,

The week beginning the 3rd February is National Story Telling week. Throughout the week, children will learn about story-telling and will each create their own story to tell.

We would like to invite parents/guardians and family members to come into school for a story-telling session in which your child can share their work with you.

The sessions will be as follows:

**Reception and KS1:** Thursday 6th February at 2.30pm (Maple, Elm Beech Classes)

**KS2:** Friday 7th February at 2.30pm (Holly, Chestnut, Redwood, Cherry Classes)

Please be aware we can only extend the invite to 2 adults per family due to capacity. **Please enter the school through the main school entrance.**

Children will be expected to stay until the end of the school day. For pupil safety, at 3.15pm, we will expect parents to go and wait on the playground while children are dismissed. If you have more than one child within the school, you will be able to go between your children's classes.

We recognise that there will be some of you who are unable to make it. Please do not worry, we will ensure children have a school adult to share their work with. Children will also take their work home. We would welcome it if families who were unable to make it, could send in a photo of them sharing their child's story at home.

Yours Sincerely,

Ms Whittall

English Lead

## **NSPCC Number Day- Wear a Number-** Friday 7th January

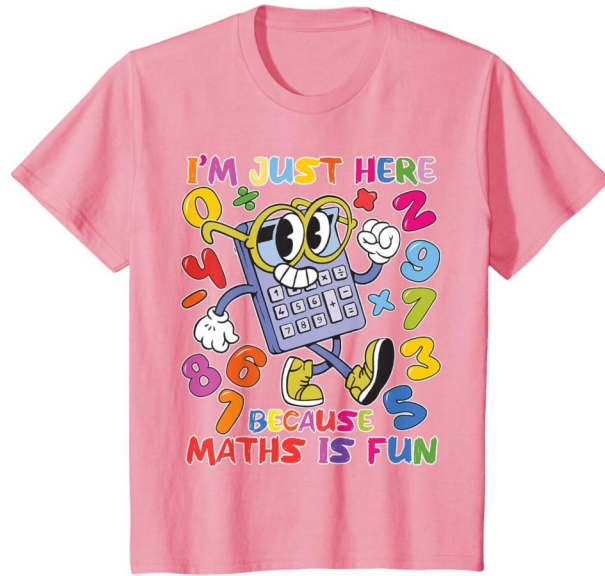
On Friday 7th February pupils are invited to wear an item of clothing that contains a number to school.

This could be a favourite sports top or cap, or even a onesie. Or why not get more creative and design a unique t-shirt or hat.

During this day pupils will be completing a range of activities about numbers and you are welcome to make a donation to the NSPCC by following the link

below: <https://www.nspcc.org.uk/support-us/ways-to-give/donate/>





## Clubs



### Spring Term Budbrooke Teacher Led Lunchtime Clubs

Club	Run by	When	Who for?	Where?
Mindfulness	Mrs Montgomery	SPR 1- Mon (5 weeks)	Year 3/4	Elm Class
Mindfulness	Mrs Magnall	SPR 2- Wed (5 weeks)	Year 3/4	Elm Class
Running Club	Mr Brereton	SPR 1- Wed (5 Weeks)	Year 1/2	Playground/Field
Running Club	Miss Thorpe	SPR2- Wed (5 weeks)	Year 3-6	Playground/Field
Cheerleading Club	Mrs Lavelle	SPR 1- Wed (5 weeks)	Year 3-6	Small Hall
Art Club	Miss Fletcher	SPR 2- Wed (5 weeks)	Year 1/2	Beech Class
Reading Buddies Club	Ms Whittall	SPR 1 – Tues (5 weeks)	Year 1-6	Cherry Class
Gardening Club	Mrs Prestidge	SPR 2- Tues (5 weeks)	Year 5/6	Redwood Class

The children were really engaged with last term's clubs and we are excited to be able to offer a new set of teacher led clubs for the Spring Term.

These will take place over lunchtimes and children have had the opportunity to discuss these in their classes and sign up for them if they wish.

## Children's Mental Health Week



**Children's Mental Health Week 2025- Wear Your Scarf to School Day**

February 3rd - 9th is Children's Mental Health Week. We are planning a 'Wear Your Scarf to School' day on Wednesday 5th February where staff and children can wear their scarves as a symbol of support for children's mental wellbeing, while celebrating the values of SCARF - Safety, Caring, Achievement, Resilience and Friendship.

The theme this year is "Know Yourself-Grow Yourself" and throughout the week the children will be completing activities and playing games to develop and promote the importance of mental well-being.

We look forward to seeing the school wearing colourful scarves!



### Elm Class Assembly- Change of date



The date of Elm Class Assembly for parents is Wednesday 9th July. This is different from the date shared in previous newsletters. Please accept our apologies for any inconvenience that this change of date may cause.

## Changes to Teaching Assistant timetables



Teaching assistants will now be working in the following year groups as well as continuing to deliver high-quality specialised interventions throughout the whole school:

Maple Class (Reception) - Mrs Lancaster

Elm Class (Year 1) - Mrs Jackson

Beech Class (Year 2) - Mrs Tyler

Holly Class (Year 3) - Mrs Cole

Chestnut Class (Year 4) - Mr Philpott

Redwood Class (Year 5) - Mrs Medlock / Mr Philpott

Cherry Class (Year 6) - Mrs Medlock / Mr Philpott

## School Uniform

SCHOOL  
UNIFORM

At Budbrooke we pride ourselves in being smart, well presented and ready for learning.

**Uniform list (non PE days):**

- School logo sweatshirt/cardigan
- Pale blue polo shirt
- Mid-grey skirt, pinafore dress, trousers or shorts
- Plain dark socks to be worn under trousers, dark grey socks or tights to be worn with skirts/pinafore dresses
- Black plain shoes. **Trainers are only to be worn for PE**
- Pale blue/white checked dresses (optional) may be worn from the Summer Term until Autumn Half Term with white socks.
- Dark coloured coat.





### **Jewellery, Hair Ornaments, Make-up and Nail Varnish**

For many reasons, including safety, we do not allow children to wear jewellery. The exceptions to this rule are earring studs in pierced ears. Children are required to remove these during PE lessons to prevent them from causing injury. If for some reason they cannot be removed, they must be taped over.

Please note: Teachers are not permitted to remove earrings.

- Hair bands, ribbons/bows should be plain
- Make up and nail varnish should not be worn to school, this includes temporary false or acrylic nails.

Watches Analogue and digital watches are acceptable when your child is able to tell the time.

SMART watches are not allowed due to safeguarding.

School uniform is available from:

“Brigade” website: [www.brigade.uk.com](http://www.brigade.uk.com)

or

My Clothing: [www.myclothing.com](http://www.myclothing.com).

If you require any support with school uniform please do not hesitate to contact the school office.



### **Wanted Spare Pants, Socks & Tights**

Class Reception , Year 1 and Year 2 are requesting for old pants, socks and tights to have as spares in the classes. If you have any to contribute to the school that would be great and can leave with the class or bring into the school office.

You are now able to purchase School Uniform from Stitch Tech who are based in Leamington Spa.

Orders can be placed in person at their showroom located at:

*Stitchtech Ltd,*

*7C Jenton Road,*

*Sydenham Industrial Estate,*

*Leamington Spa,*

*CV31 1XS*

Or online for home delivery or click and collect

<https://www.stitchtech.co.uk/product-category/school-uniforms/budbrooke-primary-school/>

If you have any questions please email them direct using [sales@stitchtech.co.uk](mailto:sales@stitchtech.co.uk)



## Job Vacancy Opportunity at Budbrooke Primary School



Our Wrap around care is looking for a Playworker. We are looking to appoint a well organised, enthusiastic and motivated playworker. The successful candidate will assist the team in the delivery of creative and appropriate play opportunities and provide general care and welfare for the children.

Working Monday to Friday 7.30am to 9.00am

Monday to Thursday 3.00pm to 6.00pm and Fridays 3.00pm to 5.00pm

(These shift patterns are open to negotiation.)

21.5 hours per week

£12.45 per hour.

We are looking for someone who can demonstrate a passion to provide quality childcare and are able to manage activities.

### Key Requirements

- **Team Player**
- **Prepare, deliver and participate in play**
- **Set up and clear away after sessions**
- **Ensure the welfare and safety of the children**
- **Promote good behaviour**
- **NVQ 2 or equivalent qualification or experience in a relevant discipline**
- **Good communication and listening skills**
- **Understanding safeguarding procedures**

For an application form please contact the school office on [admin2033@welearn365.com](mailto:admin2033@welearn365.com). If you wish to discuss the role further please do contact Mrs N Orton on 01926492045.

## **P.E Kits to be worn to School**

We are always looking at ways to maximise learning time within our curriculum and as a result we would like pupils to come to school in their PE kit on the specified days below:

Maple (Reception) - Monday

Elm (Year 1) - Tuesday and Wednesday

Beech (Year 2) - Monday and Wednesday

Holly (Year 3) - Monday and Friday

Chestnut (Year 4)- Tuesday and Friday

Redwood (Year 5) - Tuesday and Wednesday

Cherry (Year 6) - Wednesday and Thursday

This will enable us to ensure that the maximum time possible is available to develop integral skills and knowledge that provide opportunities for pupils to become physically confident in a way which supports their health and fitness.

### **PE Kit**

Pupils should come to school in the following PE kit:

- House colour T-shirt with school logo (blue, green or red)
- Navy blue shorts or navy-blue jogging bottoms for outdoor games in cold weather
- Navy blue hoodie for outdoor games in cold weather (school sweatshirt can be worn as an alternative)
- Black pumps for indoor PE, black plain trainers for outdoor PE

### **Jewellery**

For many reasons, including safety, we do not allow children to wear jewellery. The exceptions to this rule are earring studs in pierced ears. Children are required to remove these during PE lessons to prevent them from causing injury. If for some reason they cannot be removed, they must be taped over.

Please note: Teachers are not permitted to remove earrings. All PE kits will be sent home from school on Friday 17/01/25. Thank you in advance for your support to maximise your child's learning time within the PE curriculum.

## Absences and Lateness

If your child is unwell and unable to make it into school for any reason please notify the school office of this absence giving a clear reason by **9.00am**. This can be done via email or calling the school office and pressing option 1.

If your child is going to be late after **8.55am** (this is when registration closes) please could you also report this by calling the school office and pressing option 1.

This helps with numbers for the catering team in the kitchen.



## Upcoming promotional lunches for 2025!



## Diary Dates



### February

w/c **3rd** National Story Telling Week

**4th** Key Stage 1 Sat's Information Evening (Year 2)

- 17:00-17:30, please enter school via the main entrance.

**4th** Warwickshire Sings

**5th** Children's Mental Health Day (Wear a scarf)

**6th** Year 4 Multiplication Tables Check Information Evening (Year 4)

- please enter school via the main entrance.

**7th** NSPCC Number Day

**10th** Key Stage 2 SAT's Information Evening (Year 6)

**17th-21st** *Half Term*

**24th** *Inset Day*

### March

**4th** Parents Evening

**5th** Parents Evening

**6th** World Book Day

w/c **10th** British Science Week

w/c **14th** Book Fair

**31st** Year 1 Phonics Screening Information Evening (Year 1)

**FROM**  
**£10 PER DAY**

**KA**  
KITS ACADEMY

**TIMES**  
8:30AM - 4:30PM

**FEBRUARY HALF TERM**  
17TH FEBRUARY - 21ST FEBRUARY  
**4 GREAT LOCATIONS**



**Coventry**

Hollyfast Primary School  
CV6 2AH



**Nuneaton**

Park Lane Primary School  
CV10 8NL



**Rugby**

Rugby College  
CV21 1AR



**Warwick**

Newburgh Primary School  
CV34 6LD

**ACTIVITIES**

LITTLE LACES 

MULTI-SPORTS 

AMERICAN FLAG FOOTBALL & TAG RUGBY 

FOOTBALL 

ARCHERY & FENCING 

TRAMPOLINING & GYMNASTICS 

DANCE 

**07772 873 271**  
**BOOKINGS@KITSACADEMY.COM**

**FOR MORE INFORMATION SCAN THE QR CODE**

**WWW.KITSACADEMY.COM**  
CLICK THE YELLOW BOOK NOW BUTTON

**onside**  
COACHING.CO.UK

**HOLIDAY CAMPS**

**FEBRUARY** HALFTERM

Monday 17th to Friday 21st February

Active Kids,  
Football and  
Dance Courses!



Fun, active, and flexible  
childcare for ages 5 -11

ONLY **£20** per day

Locations near you...

<b>Warwick</b> Aylesford School CV34 6XR	<b>Stratford</b> Stratford School CV37 9DH	<b>Kenilworth</b> St. Augustine's Primary School CV8 2JR
--	--	--

Book now at [onsidecoaching.co.uk](http://onsidecoaching.co.uk)

## Contact Us

### **Budbrooke Primary School**

Styles Close,

Hampton Magna,

Warwick,

CV35 8TP

01926 492045

admin2033@welearn365.com

<https://www.budbrooke.warwickshire.sch.uk>

